

# City View PG



The City View Parking Garage located in Miami, FL is a CIP structure with Architectural Precast cladding panels Covering two elevations. The unique architecture of these panels resembling honey combs provide the openness required for ventilating the building as well as a unique look for the structure. Panels spanning between CIP columns were designed to resist hurricane wind loads of 86psf at typical levels and canopy wind loads 237psf at roof. “Zig-Zag” reinforcing cages filling the space between the openings were designed to transfer loads vertically in the panel into top and bottom solid sections. The 1’-6” solid sections span horizontally to transfer loads into the CIP columns. Numerous different opening patterns made for one challenging reinforcing construction, and lots of variations.

*Precaster: Coreslab Structures (Miami)*

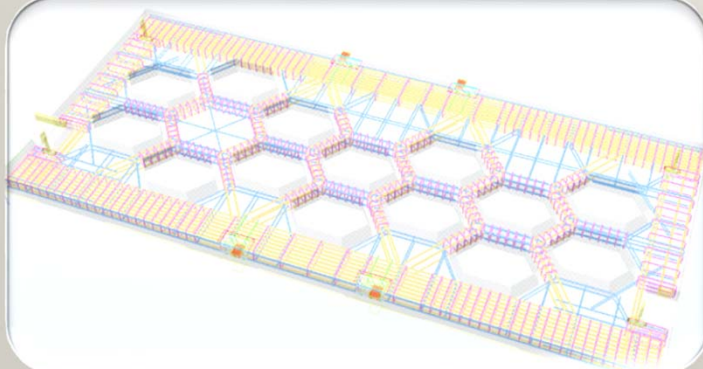
*Contractor: KVC Constructors*

*Architect/EOR: Tim Haahs Engineers & Arch.*



City View Parking Garage

Print #141013  
Date: 10/1/11  
Lat/Lon: 25.812052, -80.191111



Upper Left: Birds eye view of PG site  
Lower Left: 3D reinforcing view  
Above: Close up view of honeycomb panels